

**Terrace Elem School**  
**CCSD 62**  
**Des Plaines, ILLINOIS**  
**GRADES : K 1 2 3 4 5**



**ILLINOIS**  
**SCHOOL**  
**REPORT**  
**CARD**

State and federal laws require public school districts to release report cards to the public each year.

This year, we have updated the report card to provide a full picture of school performance beyond just test scores. A display of this data designed with parents and communities in mind is available on [illinoisreportcard.com](http://illinoisreportcard.com). All of the metrics posted on [illinoisreportcard.com](http://illinoisreportcard.com) are also included in this report.

## STUDENTS

RACIAL/ETHNIC BACKGROUND AND OTHER INFORMATION												
	White	Black	Hispanic	Asian	Native Hawaiian /Pacific Islander	American Indian	Two or More Races	Percent Low-Income	Percent Limited-English-Proficient	Percent IEP	Percent Homeless	Total Enrollment
<b>School</b>	46.9	2.9	35.3	13.3	0.0	0.0	1.7	33.2	31.5	16.2	1.2	241
<b>District</b>	41.6	4.2	41.0	11.3	0.3	0.4	1.3	49.9	31.7	17.5	1.0	4,810
<b>State</b>	48.8	17.3	25.5	4.7	0.1	0.3	3.2	49.9	10.5	14.3	2.2	2,041,779

**Low-income** students come from families receiving public aid; live in institutions for neglected or delinquent children; are supported in foster homes with public funds; or are eligible to receive free or reduced-price lunches. IEP Students are those students eligible to receive special education services.

**Limited-English-proficient** students are those students eligible for transitional bilingual programs. **Total Enrollment** is based on Home School. **Homeless** students are who do not have permanent and adequate homes.

	High Sch. Dropout Rate	Chronic Truancy Rate	Mobility Rate	Attendance Rate
<b>School</b>		0.0	9.8	96.3
<b>District</b>		0.7	10.5	95.6
<b>State</b>		9.8	12.2	94.4

**Mobility rate** is based on the number of times students enroll in or leave a school during the school year. **Chronic truants** are students who are absent from school without valid cause for 9 or more of the last 180 school days.

## INSTRUCTIONAL SETTING

PARENTAL CONTACT*	
	Percent
<b>School</b>	100.0
<b>District</b>	100.0
<b>State</b>	95.3

TOTAL SCHOOL DAYS	
	Days
<b>School</b>	174
<b>District</b>	174
<b>State</b>	175

8TH GRADERS PASSING ALGEBRA I **	
<b>School</b>	
<b>District</b>	0.0
<b>State</b>	28.4

\*\* For the 8th graders passing algebra I, if the percentage is 0, it means that an Algebra I course is not offered.

\* Parental contact includes parent-teacher conferences, parental visits to school, school visits to home, telephone conversations, and written correspondence.

STUDENT-TO-STAFF RATIOS			
Pupil-Teacher Elementary	Pupil-Teacher Secondary	Pupil-Certified Staff	Pupil-Administrator
--	--	--	--
15.4		8.8	162.4
18.7		11.3	176.5

HEALTH AND WELLNESS (days per week)	
<b>School</b>	3
<b>District</b>	4
<b>State</b>	4

AVERAGE CLASS SIZE (as of the first school day in May)											
Grades	K	1	2	3	4	5	6	7	8	9 - 12	Overall
School	14.5	18.0	18.0	19.0	21.0	17.0					17.9
District	20.0	19.8	20.1	21.2	23.2	23.9					24.1
State	20.4	21.4	22.0	22.5	23.0	23.1					21.1

TIME DEVOTED TO TEACHING CORE SUBJECTS (Minutes Per Day)												
Grades	Mathematics			Science			English/Language Arts			Social Science		
	3	6	8	3	6	8	3	6	8	3	6	8
School	60			30			150			30		
District	60			30			147			30		
State	71			34			133			30		

TEACHER INFORMATION (Full-Time Equivalents)											
	White	Black	Hispanic	Asian	Native Hawaiian/ Pacific islander	American Indian	Two or More Races	Unknown	Male	Female	Total Number
State	83.4	6.0	5.7	1.4	0.1	0.2	0.8	2.5	23.3	76.7	127,152

TEACHER INFORMATION (Continued)			
	Average Teaching Experience (Years)	% of Teachers with Bachelor's Degrees	% of Teachers with Master's & Above
School	--	--	--
District	13.2	21.8	78.2
State	13.1	38.1	61.4

The No Child Left Behind Act requires that information for certain data elements be disaggregated by high- and low-poverty schools. Poverty (low-income) is defined on page 1 of all report cards. High- and low-poverty schools include those in the top and bottom quarters of the poverty distribution of schools in the state.

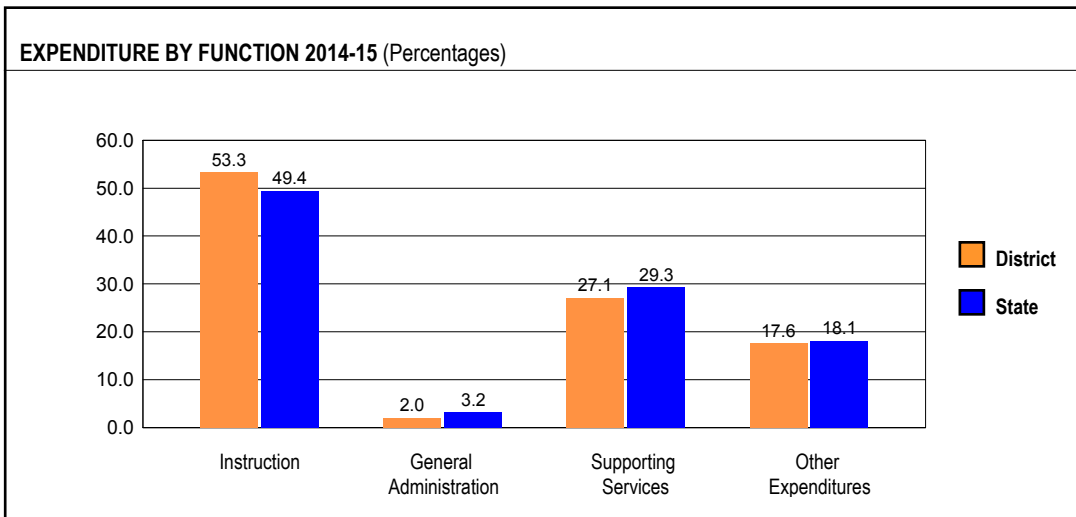
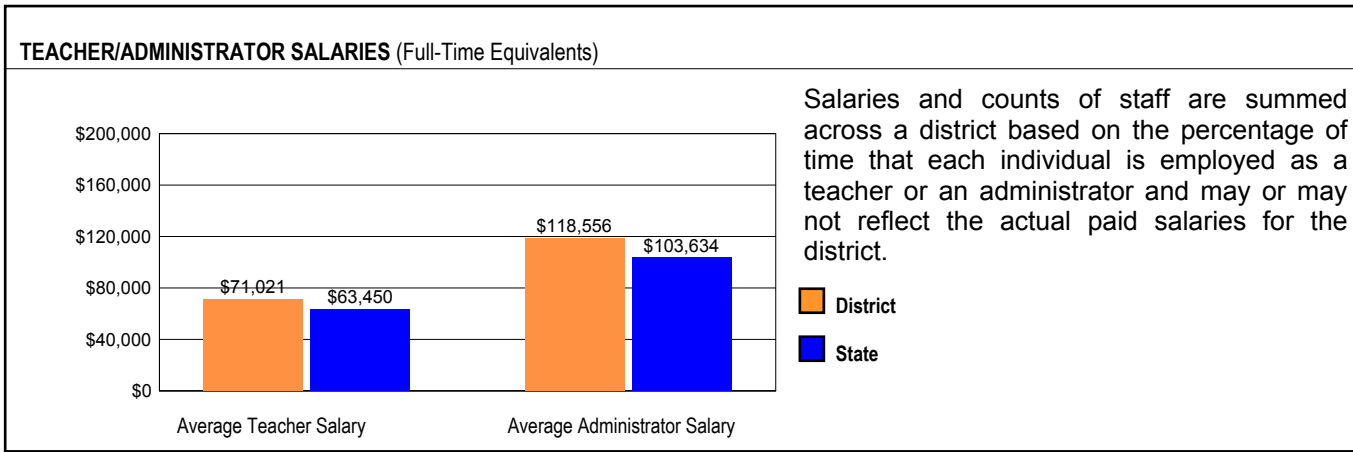
Some teacher/administrator data are not collected at the school level.

TEACHER RETENTION RATE	
School	90.2
District	87.6
State	85.8

PRINCIPAL TURNOVER (Count)	
School	1.0
District	2.0
State	2.0

TEACHER ATTENDANCE	
School	62.5
District	74.6
State	76.5

## SCHOOL DISTRICT FINANCES



### REVENUE BY SOURCE 2014-15

	District	District %	State %
Local Property Taxes	\$65,840,854	77.2	62.8
Other Local Funding	\$4,550,542	5.3	4.6
General State Aid	\$4,832,932	5.7	16.3
Other State Funding	\$5,002,968	5.9	8.6
Federal Funding	\$5,039,693	5.9	7.7
<b>TOTAL</b>	<b>\$85,266,989</b>		

### EXPENDITURE BY FUND 2014-15

	District	District %	State %
Education	\$59,653,976	73.6	73.4
Operations & Maintenance	\$4,902,908	6.0	6.4
Transportation	\$2,837,223	3.5	3.7
Debt Service	\$9,574,596	11.8	8.1
Tort	\$491,414	0.6	1.3
Municipal Retirement/ Social Security	\$2,422,866	3.0	2.1
Fire Prevention & Safety	\$11,750	0.0	0.5
Capital Projects	\$1,170,721	1.4	4.7
<b>TOTAL</b>	<b>\$81,065,454</b>		

### OTHER FINANCIAL INDICATORS

	2013 Equalized Assessed Valuation per Pupil	2013 Total School Tax Rate per \$100	2014-15 Instructional Expenditure per Pupil	2014-15 Operating Expenditure per Pupil
District	\$356,575	4.26	\$10,140	\$16,578
State	**	**	\$7,712	\$12,821

\*\* Due to the way Illinois school districts are configured, state averages for equalized assessed valuation per pupil and total school tax rate per \$100 are not provided.

Equalized assessed valuation includes all computed property values upon which a district's local tax rate is calculated.

Total school tax rate is a district's total tax rate as it appears on local property tax bills.

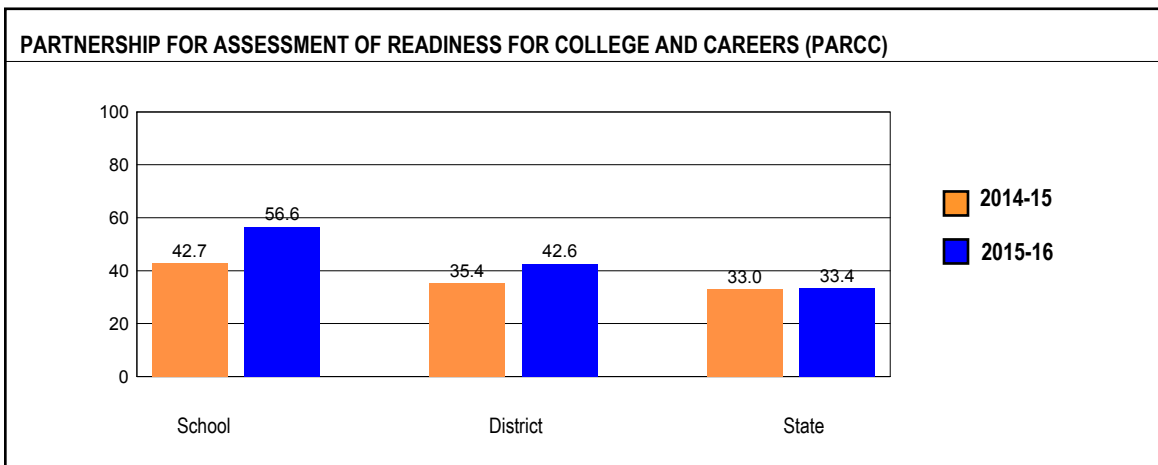
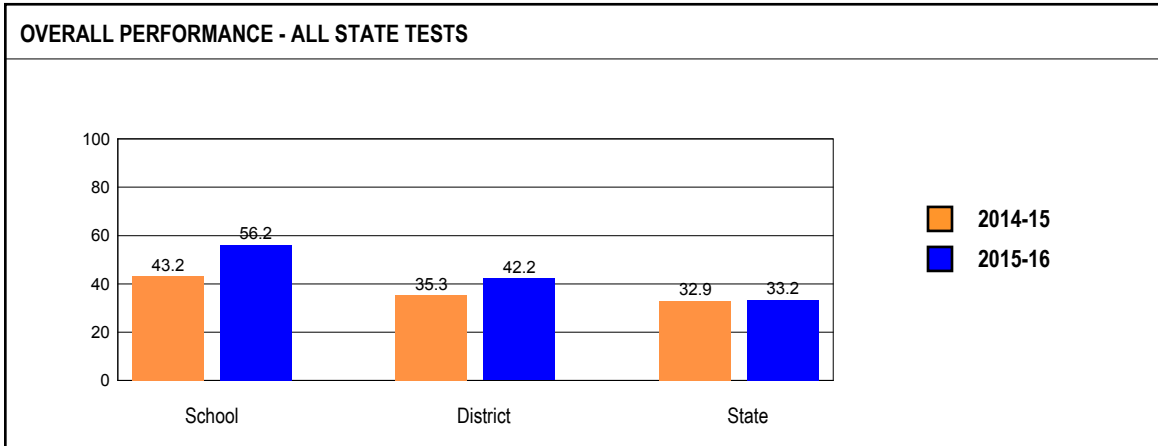
Instructional expenditure per pupil includes the direct costs of teaching pupils or the interaction between teachers and pupils.

Operating expenditure per pupil includes the gross operating cost of a school district excluding summer school, adult education, bond principal retired, and capital expenditures.

## ACADEMIC PERFORMANCE

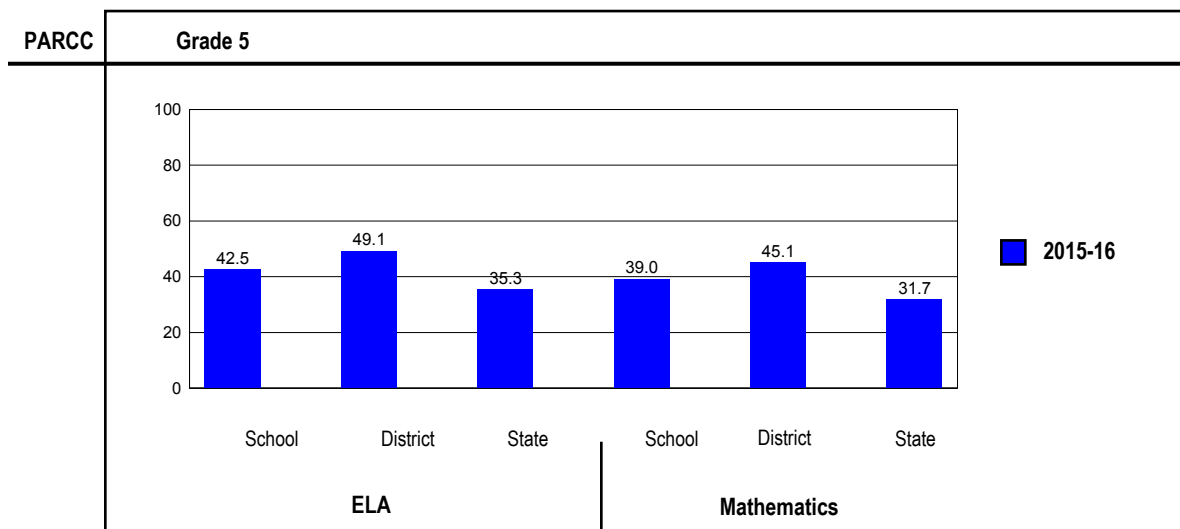
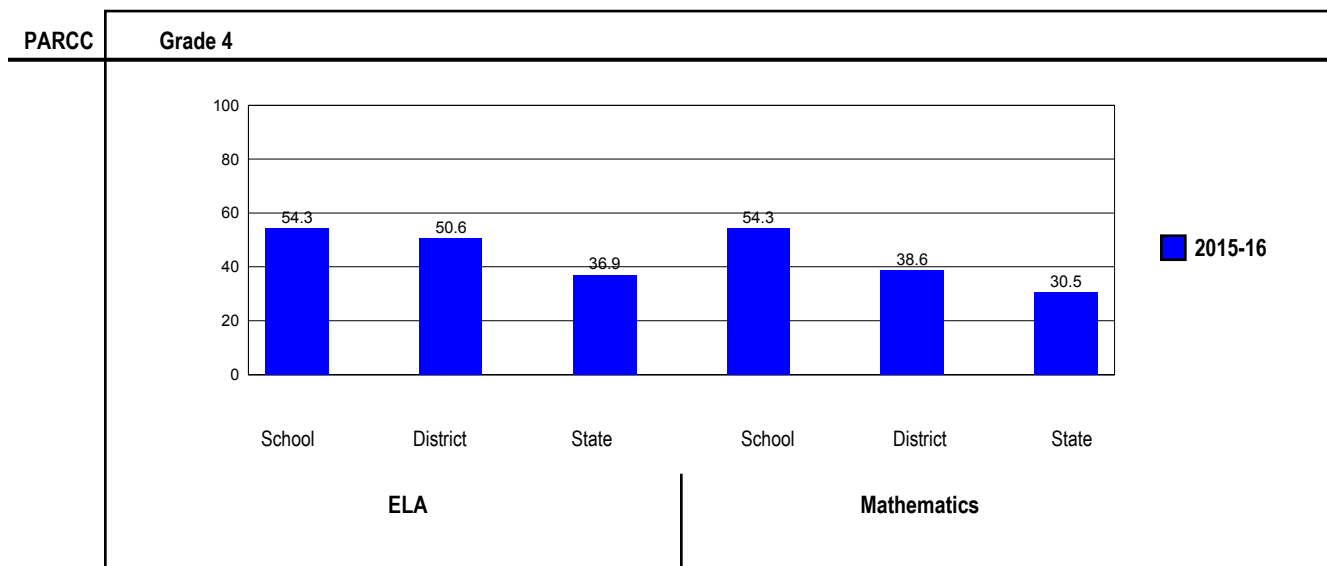
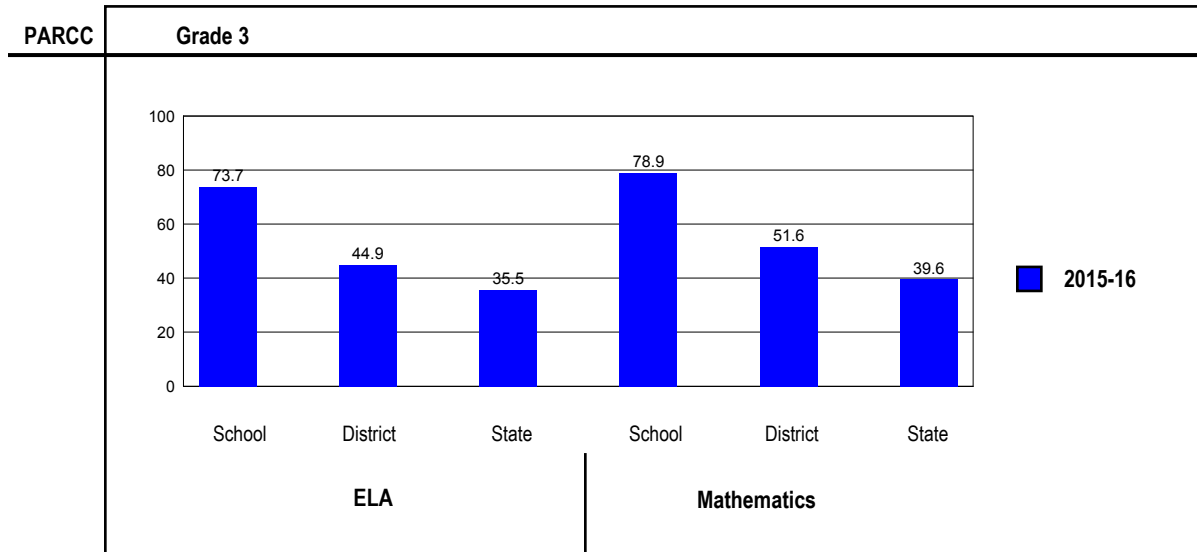
### OVERALL STUDENT PERFORMANCE

These charts present the overall percentage of state test scores categorized as meeting or exceeding the PARCC expectations or DLM-AA Standards for your district, and the state.



**PARCC PERFORMANCE**

These charts present the overall percentage of state test scores categorized as meeting or exceeding the PARCC expectations or DLM-AA Standards for your district, and the state.



## PERFORMANCE ON STATE ASSESSMENTS

The PARCC is administered to students in grade 3 through 8 and high school. The DLM-AA is administered to students in grade 3 through 8 and 11 with disabilities whose Individualized Education Programs (IEPs) indicate that participation in the PARCC would not be appropriate.

Students with disabilities have an IEP (No Child Left Behind Act). An IEP is a written plan for a child with a disability who is eligible to receive special education services under the Individuals with Disabilities Education Act.

In order to protect students' identities, test data for groups of fewer than ten students are not reported.

PERCENTAGE OF STUDENTS NOT TESTED IN STATE TESTING PROGRAMS FOR ELA															
		Gender			Racial/Ethnic Background							LEP	Migrant	Students with Disabilities	Economically Disadvantaged
		All	Male	Female	White	Black	Hispanic	Asian	Native Hawaiian/Pacific Islander	American Indian	Two or More Races				
School	*Enrollment	125	66	59	58	4	42	19	0	0	2	29	0	22	40
	Reading	0.0	0.0	0.0	0.0		0.0	0.0				0.0		0.0	0.0
District	*Enrollment	3,079	1,603	1,476	1,296	146	1,262	337	9	9	20	618	0	513	1,527
	Reading	0.3	0.1	0.5	0.3	1.4	0.3	0.0			0.0	0.2		0.2	0.2
State	*Enrollment	1,050,307	537,851	512,454	512,582	177,823	272,642	49,633	1,043	2,886	33,656	87,711	198	147,577	527,950
	Reading	2.5	2.5	2.6	2.2	3.0	2.9	2.0	3.5	3.0	2.7	2.5	1.0	3.6	2.7

\* Enrollment as reported during the testing windows for grades 3 - 8 and high school.

Number of LEP Students who have attended schools in the U.S. for less than 12 months and are not assessed on the State's reading/language arts test: 0

PERCENTAGE OF STUDENTS NOT TESTED IN STATE TESTING PROGRAMS FOR MATHEMATICS															
		Gender			Racial/Ethnic Background							LEP	Migrant	Students with Disabilities	Economically Disadvantaged
		All	Male	Female	White	Black	Hispanic	Asian	Native Hawaiian/Pacific Islander	American Indian	Two or More Races				
School	*Enrollment	126	67	59	58	4	43	19	0	0	2	30	0	23	41
	Mathematics	0.0	0.0	0.0	0.0		0.0	0.0				0.0		0.0	0.0
District	*Enrollment	3,110	1,623	1,487	1,306	146	1,275	345	9	9	20	649	0	515	1,555
	Mathematics	0.5	0.4	0.5	0.5	2.1	0.3	0.3			0.0	0.2		0.2	0.3
State	*Enrollment	1,025,813	525,396	500,415	494,198	176,422	271,200	47,430	1,046	2,841	32,624	91,569	202	145,620	524,025
	Mathematics	2.5	2.5	2.6	2.1	3.2	3.0	1.5	3.5	3.0	2.6	2.0	1.0	3.8	2.8

\* Enrollment as reported during the testing windows for grades 3 - 8 and high school.

## Partnership for Assessment of Readiness for College and Careers (PARCC)

Each Performance Level is a broad, categorical level defined by a student's overall scale score and used to report overall student performance by describing how well students met the expectations for their grade level/course. Each Performance Level is defined by a range of overall scale scores for the assessment. There are five Performance Levels for PARCC assessments:

- Level 1: Did not yet meet expectations
- Level 2: Partially met expectations
- Level 3: Approached expectations
- Level 4: Met expectations
- Level 5: Exceeded expectations

Students performing at levels 4 and 5 met or exceeded expectations, have demonstrated readiness for the next grade level/course and, ultimately, are on track for college and careers. Performance Level Descriptors (PLDs) describe the knowledge, skills, and practices that students should know and be able to demonstrate at each Performance Level in each content area (ELA/L and mathematics), and at each grade level/course. PLDs are available at <http://avocet.pearson.com/PARCC/Home>.

### Grade 3

#### Grade 3 - All

Levels	ELA					Mathematics				
	1	2	3	4	5	1	2	3	4	5
School	10.5	7.9	7.9	47.4	26.3	2.6	15.8	2.6	44.7	34.2
District	14.6	17.4	23.2	38.3	6.6	10.6	12.5	25.3	39.2	12.4
State	20.8	19.8	23.9	32.2	3.2	13.8	20.4	26.2	31.8	7.8

#### Grade 3 - Gender

Levels	ELA					Mathematics					
	1	2	3	4	5	1	2	3	4	5	
Male	School	16.7	11.1	16.7	27.8	27.8	5.6	16.7	5.6	44.4	27.8
	District	16.6	18.8	23.1	36.5	5.1	11.2	12.0	25.4	37.3	14.1
	State	23.8	20.7	24.2	29.2	2.2	14.8	20.2	25.5	31.4	8.0
Female	School	5.0	5.0	0.0	65.0	25.0	0.0	15.0	0.0	45.0	40.0
	District	12.1	15.6	23.2	40.6	8.5	9.7	13.3	25.2	41.6	10.2
	State	17.7	18.9	23.6	35.4	4.4	12.7	20.6	27.0	32.2	7.6

**Grade 3 - Racial/Ethnic Background**

Levels	ELA					Mathematics					
	1	2	3	4	5	1	2	3	4	5	
White	School	9.5	0.0	9.5	57.1	23.8	0.0	14.3	4.8	42.9	38.1
	District	5.4	14.7	23.2	47.8	8.9	4.0	8.0	23.7	48.2	16.1
	State	12.2	17.1	25.8	40.5	4.4	7.6	15.7	26.0	40.3	10.3
Black	School										
	District	40.0	26.7	13.3	20.0	0.0	28.6	14.3	35.7	21.4	0.0
	State	34.4	23.9	21.7	19.0	0.9	27.0	28.2	25.8	17.3	1.8
Hispanic	School										
	District	26.1	21.3	23.7	26.6	2.4	19.0	18.1	28.1	30.0	4.8
	State	29.5	23.5	23.1	22.7	1.2	17.5	25.9	28.8	24.5	3.4
Asian	School										
	District	2.4	4.8	26.2	50.0	16.7	0.0	4.9	17.1	48.8	29.3
	State	7.0	10.0	18.0	53.4	11.6	3.7	7.3	15.6	43.1	30.4
Native Hawaiian/Pacific Islander	School										
	District										
	State	11.8	11.2	21.7	47.2	8.1	9.2	12.3	29.4	33.1	16.0
American Indian	School										
	District										
	State	26.4	24.1	20.1	27.8	1.6	18.2	23.1	28.4	23.6	6.7
Two or More Races	School										
	District	0.0	40.0	20.0	40.0	0.0	0.0	30.0	30.0	20.0	20.0
	State	17.4	19.4	24.1	34.8	4.3	13.5	19.5	25.5	32.5	9.0

**Grade 3 - Limited-English-Proficient**

Levels	ELA					Mathematics				
	1	2	3	4	5	1	2	3	4	5
School	20.0	20.0	0.0	40.0	20.0	10.0	20.0	0.0	70.0	0.0
District	21.4	22.6	27.1	25.9	3.0	14.4	18.1	28.4	35.4	3.7
State	34.1	25.1	22.2	18.1	0.6	19.2	26.9	28.3	22.8	2.9

**Grade 3 - Economically Disadvantaged**

Levels	ELA					Mathematics					
	1	2	3	4	5	1	2	3	4	5	
Free/Reduced Price Lunch	School	25.0	16.7	0.0	50.0	8.3	8.3	33.3	0.0	41.7	16.7
	District	23.6	24.7	20.1	29.0	2.7	17.8	18.6	26.1	31.4	6.1
	State	30.4	24.1	23.4	21.1	0.9	20.7	26.7	27.7	22.3	2.6
Not Eligible	School	3.8	3.8	11.5	46.2	34.6	0.0	7.7	3.8	46.2	42.3
	District	5.0	9.5	26.4	48.3	10.7	2.5	5.9	24.4	47.9	19.3
	State	9.6	14.8	24.5	45.1	5.9	5.7	13.1	24.5	42.8	13.9

**Grade 4****Grade 4 - All**

Levels	ELA					Mathematics				
	1	2	3	4	5	1	2	3	4	5
School	17.4	13.0	15.2	45.7	8.7	6.5	21.7	17.4	45.7	8.7
District	8.8	15.8	24.8	39.3	11.3	8.5	25.8	27.1	34.9	3.7
State	13.8	20.2	29.1	31.0	5.9	16.3	26.5	26.7	27.9	2.6



**Grade 4 - Gender**

Levels	ELA					Mathematics					
	1	2	3	4	5	1	2	3	4	5	
Male	School	25.0	16.7	20.8	37.5	0.0	8.3	25.0	12.5	45.8	8.3
	District	10.4	17.8	26.4	36.1	9.3	8.4	25.3	27.8	33.7	4.8
	State	17.1	21.9	29.2	27.8	4.0	17.3	26.4	25.9	27.8	2.7
Female	School	9.1	9.1	9.1	54.5	18.2	4.5	18.2	22.7	45.5	9.1
	District	7.0	13.6	23.0	42.8	13.6	8.6	26.3	26.3	36.2	2.5
	State	10.5	18.3	29.0	34.4	7.8	15.2	26.6	27.7	28.0	2.5

**Grade 4 - Racial/Ethnic Background**

Levels	ELA					Mathematics					
	1	2	3	4	5	1	2	3	4	5	
White	School	5.0	0.0	20.0	60.0	15.0	5.0	5.0	15.0	60.0	15.0
	District	4.5	11.4	25.5	43.2	15.5	7.2	17.5	26.0	44.4	4.9
	State	8.4	15.3	29.2	39.2	8.0	9.3	21.2	29.2	37.0	3.2
Black	School	15.4	23.1	26.9	30.8	3.8	23.1	23.1	34.6	15.4	3.8
	District	24.8	28.1	28.3	17.3	1.5	31.8	34.3	22.0	11.5	0.4
	State										
Hispanic	School	35.3	29.4	0.0	35.3	0.0	5.9	47.1	11.8	29.4	5.9
	District	15.0	23.3	22.8	31.6	7.3	10.4	38.9	27.5	21.8	1.6
	State	18.5	26.3	31.0	22.0	2.3	21.2	33.9	26.5	17.6	0.7
Asian	School										
	District	3.2	7.9	23.8	54.0	11.1	3.1	17.2	29.7	43.8	6.3
	State	4.3	8.6	21.0	47.9	18.2	4.0	11.0	20.4	50.7	13.9
Native Hawaiian/Pacific Islander	School										
	District										
	State	6.8	15.5	29.8	38.5	9.3	7.4	23.9	27.0	37.4	4.3
American Indian	School										
	District										
	State	16.0	22.1	33.6	24.1	4.3	17.5	30.8	29.3	21.6	0.8
Two or More Races	School										
	District										
	State	12.5	17.0	28.8	33.6	8.2	15.6	24.8	26.1	29.9	3.6

**Grade 4 - Limited-English-Proficient**

Levels	ELA					Mathematics				
	1	2	3	4	5	1	2	3	4	5
School	36.4	36.4	18.2	9.1	0.0	9.1	54.5	9.1	27.3	0.0
District	21.3	33.3	25.5	19.1	0.7	16.6	41.4	29.0	13.1	0.0
State	37.4	35.2	21.3	6.0	0.2	35.9	39.0	18.3	6.6	0.2

**Grade 4 - Economically Disadvantaged**

Levels	Reading					Mathematics					
	1	2	3	4	5	1	2	3	4	5	
Free/Reduced Price Lunch	School	40.0	20.0	6.7	33.3	0.0	13.3	46.7	6.7	26.7	6.7
	District	12.8	20.4	26.8	32.8	7.2	10.7	34.0	28.1	25.7	1.6
	State	20.7	27.0	30.4	20.2	1.8	24.5	34.1	25.3	15.5	0.6
Not Eligible	School	6.5	9.7	19.4	51.6	12.9	3.2	9.7	22.6	54.8	9.7
	District	5.0	11.5	22.9	45.4	15.3	6.5	17.9	26.2	43.7	5.7
	State	6.3	12.6	27.7	43.1	10.4	7.1	18.1	28.3	41.7	4.8

**Grade 5****Grade 5 - All**

Levels	ELA					Mathematics				
	1	2	3	4	5	1	2	3	4	5
School	12.5	25.0	20.0	37.5	5.0	12.2	19.5	29.3	36.6	2.4
District	7.1	17.7	26.1	44.6	4.5	7.6	18.9	28.4	39.0	6.0
State	12.7	23.1	28.9	33.0	2.3	12.8	26.2	29.2	27.5	4.2

**Grade 5 - Gender**

Levels	ELA					Mathematics					
	1	2	3	4	5	1	2	3	4	5	
Male	School	21.7	30.4	13.0	30.4	4.3	16.7	20.8	29.2	33.3	0.0
	District	9.0	21.4	27.8	39.1	2.6	9.6	20.7	27.0	35.6	7.0
	State	15.4	25.6	29.3	28.4	1.3	14.8	26.7	27.5	26.5	4.5
Female	School	0.0	17.6	29.4	47.1	5.9	5.9	17.6	29.4	41.2	5.9
	District	4.9	13.3	24.0	51.1	6.7	5.3	16.7	30.0	43.2	4.8
	State	9.8	20.6	28.4	37.9	3.4	10.8	25.8	31.0	28.6	3.9

**Grade 5 - Racial/Ethnic Background**

Levels	ELA					Mathematics					
	1	2	3	4	5	1	2	3	4	5	
White	School	5.9	29.4	17.6	41.2	5.9	5.9	29.4	17.6	47.1	0.0
	District	4.4	12.6	22.3	53.9	6.8	5.8	12.5	26.0	46.2	9.6
	State	7.3	17.5	29.9	42.3	3.0	7.9	20.7	30.6	35.4	5.3
Black	School										
	District	7.7	23.1	26.9	38.5	3.8	11.5	26.9	30.8	30.8	0.0
	State	23.8	32.9	27.0	15.9	0.4	24.8	37.5	25.5	11.8	0.5
Hispanic	School	26.7	13.3	33.3	20.0	6.7	18.8	18.8	37.5	18.8	6.3
	District	11.0	23.4	29.2	33.5	2.9	10.9	26.5	31.3	28.9	2.4
	State	17.3	30.0	29.8	22.1	0.7	16.3	32.7	30.7	19.1	1.2
Asian	School										
	District	2.2	13.0	28.3	54.3	2.2	0.0	10.4	27.1	52.1	10.4
	State	4.1	9.3	20.1	57.3	9.3	3.2	9.0	20.0	47.7	20.1
Native Hawaiian/Pacific Islander	School										
	District										
	State	6.7	18.2	33.3	37.6	4.2	10.8	19.9	26.5	34.3	8.4
American Indian	School										
	District										
	State	14.6	28.5	32.3	22.7	1.9	16.2	28.8	30.5	22.1	2.4
Two or More Races	School										
	District										
	State	10.9	21.8	28.9	35.4	3.0	12.9	26.1	28.5	26.8	5.7

**Grade 5 - Students with Disabilities**

Levels	ELA					Mathematics					
	1	2	3	4	5	1	2	3	4	5	
IEP	School	36.4	45.5	9.1	9.1	0.0	25.0	41.7	25.0	8.3	0.0
	District	32.9	35.4	19.0	12.7	0.0	26.3	32.5	27.5	11.3	2.5
	State	42.5	33.9	16.2	7.2	0.2	36.6	38.2	17.3	7.1	0.7
Non-IEP	School	3.4	17.2	24.1	48.3	6.9	6.9	10.3	31.0	48.3	3.4
	District	2.2	14.3	27.4	50.7	5.3	4.1	16.3	28.5	44.4	6.7
	State	8.0	21.4	30.9	37.1	2.6	9.1	24.4	31.0	30.7	4.7

**Grade 5 - Economically Disadvantaged**

Levels	ELA					Mathematics				
	1	2	3	4	5	1	2	3	4	5
<b>Free/Reduced Price Lunch</b>										
<b>School</b>	16.7	33.3	33.3	16.7	0.0	15.4	23.1	46.2	15.4	0.0
<b>District</b>	10.0	23.3	30.9	31.7	4.0	9.4	24.8	31.9	29.5	4.3
<b>State</b>	19.6	31.0	29.4	19.5	0.5	19.5	34.7	28.8	16.0	1.0
<b>Not Eligible</b>										
<b>School</b>	10.7	21.4	14.3	46.4	7.1	10.7	17.9	21.4	46.4	3.6
<b>District</b>	4.1	12.0	21.1	57.9	5.0	5.8	12.8	24.7	49.0	7.8
<b>State</b>	5.4	14.8	28.3	47.3	4.2	5.8	17.4	29.6	39.6	7.6