

North Elementary School
CCSD 62
Des Plaines, ILLINOIS
GRADES : K 1 2 3 4 5



ILLINOIS
SCHOOL
REPORT
CARD

State and federal laws require public school districts to release report cards to the public each year.

This year, we have updated the report card to provide a full picture of school performance beyond just test scores. A display of this data designed with parents and communities in mind is available on illinoisreportcard.com. All of the metrics posted on illinoisreportcard.com are also included in this report.

STUDENTS

RACIAL/ETHNIC BACKGROUND AND OTHER INFORMATION												
	White	Black	Hispanic	Asian	Native Hawaiian /Pacific Islander	American Indian	Two or More Races	Percent Low-Income	Percent Limited-English-Proficient	Percent IEP	Percent Homeless	Total Enrollment
School	35.1	11.8	38.4	12.2	0.0	0.3	2.1	68.0	51.1	15.1	2.1	575
District	41.6	4.2	41.0	11.3	0.3	0.4	1.3	49.9	31.7	17.5	1.0	4,810
State	48.8	17.3	25.5	4.7	0.1	0.3	3.2	49.9	10.5	14.3	2.2	2,041,779

Low-income students come from families receiving public aid; live in institutions for neglected or delinquent children; are supported in foster homes with public funds; or are eligible to receive free or reduced-price lunches.
IEP Students are those students eligible to receive special education services.

Limited-English-proficient students are those students eligible for transitional bilingual programs.
Total Enrollment is based on **Home School**.
Homeless students are who do not have permanent and adequate homes.

	High Sch. Dropout Rate	Chronic Truancy Rate	Mobility Rate	Attendance Rate
School		0.0	17.8	94.4
District		0.7	10.5	95.6
State		9.8	12.2	94.4

Mobility rate is based on the number of times students enroll in or leave a school during the school year.
Chronic truants are students who are absent from school without valid cause for 9 or more of the last 180 school days.

INSTRUCTIONAL SETTING

PARENTAL CONTACT*	
	Percent
School	100.0
District	100.0
State	95.3

TOTAL SCHOOL DAYS	
	Days
School	174
District	174
State	175

8TH GRADERS PASSING ALGEBRA I **	
School	0.0
District	0.0
State	28.4

** For the 8th graders passing algebra I, if the percentage is 0, it means that an Algebra I course is not offered.

* Parental contact includes parent-teacher conferences, parental visits to school, school visits to home, telephone conversations, and written correspondence.

STUDENT-TO-STAFF RATIOS			
Pupil-Teacher Elementary	Pupil-Teacher Secondary	Pupil-Certified Staff	Pupil-Administrator
--	--	--	--
15.4		8.8	162.4
18.7		11.3	176.5

HEALTH AND WELLNESS (days per week)	
School	3
District	4
State	4

AVERAGE CLASS SIZE (as of the first school day in May)											
Grades	K	1	2	3	4	5	6	7	8	9 - 12	Overall
School	25.0	17.6	21.2	23.0	27.5	26.0					22.9
District	20.0	19.8	20.1	21.2	23.2	23.9					24.1
State	20.4	21.4	22.0	22.5	23.0	23.1					21.1

TIME DEVOTED TO TEACHING CORE SUBJECTS (Minutes Per Day)												
Grades	Mathematics			Science			English/Language Arts			Social Science		
	3	6	8	3	6	8	3	6	8	3	6	8
School	60			30			150			30		
District	60			30			147			30		
State	71			34			133			30		

TEACHER INFORMATION (Full-Time Equivalents)												
	White	Black	Hispanic	Asian	Native Hawaiian/ Pacific islander	American Indian	Two or More Races	Unknown	Male	Female	Total Number	
	District	85.7	0.8	7.7	4.0	0.0	0.8	1.1	0.0	13.1	86.9	377
State	83.4	6.0	5.7	1.4	0.1	0.2	0.8	2.5	23.3	76.7	127,152	

TEACHER INFORMATION (Continued)			
	Average Teaching Experience (Years)	% of Teachers with Bachelor's Degrees	% of Teachers with Master's & Above
School	--	--	--
District	13.2	21.8	78.2
State	13.1	38.1	61.4

The No Child Left Behind Act requires that information for certain data elements be disaggregated by high- and low-poverty schools. Poverty (low-income) is defined on page 1 of all report cards. High- and low-poverty schools include those in the top and bottom quarters of the poverty distribution of schools in the state.

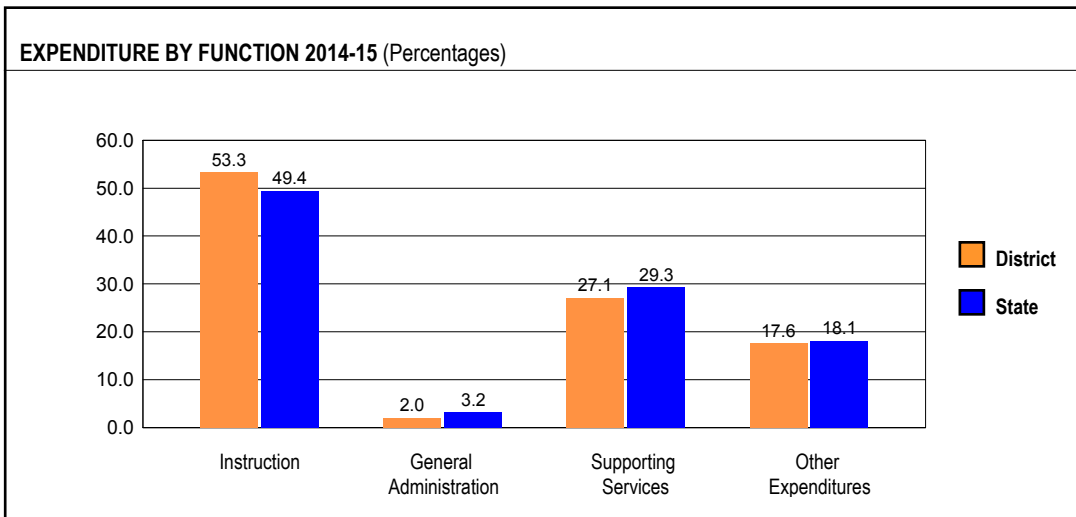
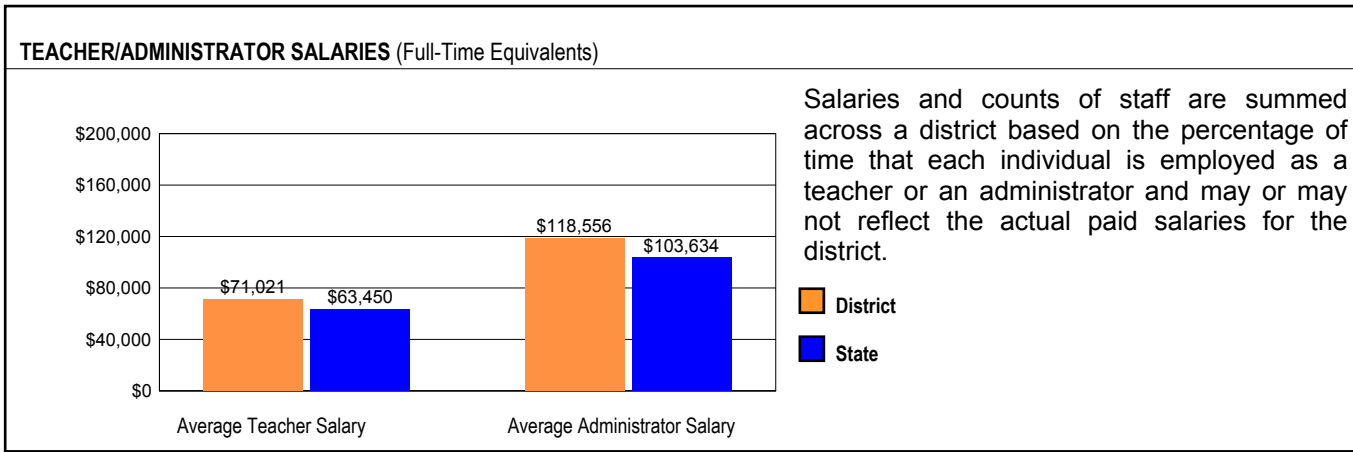
Some teacher/administrator data are not collected at the school level.

TEACHER RETENTION RATE	
School	86.6
District	87.6
State	85.8

PRINCIPAL TURNOVER (Count)	
School	2.0
District	2.0
State	2.0

TEACHER ATTENDANCE	
School	82.8
District	74.6
State	76.5

SCHOOL DISTRICT FINANCES



REVENUE BY SOURCE 2014-15

	District	District %	State %
Local Property Taxes	\$65,840,854	77.2	62.8
Other Local Funding	\$4,550,542	5.3	4.6
General State Aid	\$4,832,932	5.7	16.3
Other State Funding	\$5,002,968	5.9	8.6
Federal Funding	\$5,039,693	5.9	7.7
TOTAL	\$85,266,989		

EXPENDITURE BY FUND 2014-15

	District	District %	State %
Education	\$59,653,976	73.6	73.4
Operations & Maintenance	\$4,902,908	6.0	6.4
Transportation	\$2,837,223	3.5	3.7
Debt Service	\$9,574,596	11.8	8.1
Tort	\$491,414	0.6	1.3
Municipal Retirement/ Social Security	\$2,422,866	3.0	2.1
Fire Prevention & Safety	\$11,750	0.0	0.5
Capital Projects	\$1,170,721	1.4	4.7
TOTAL	\$81,065,454		

OTHER FINANCIAL INDICATORS

	2013 Equalized Assessed Valuation per Pupil	2013 Total School Tax Rate per \$100	2014-15 Instructional Expenditure per Pupil	2014-15 Operating Expenditure per Pupil
District	\$356,575	4.26	\$10,140	\$16,578
State	**	**	\$7,712	\$12,821

** Due to the way Illinois school districts are configured, state averages for equalized assessed valuation per pupil and total school tax rate per \$100 are not provided.

Equalized assessed valuation includes all computed property values upon which a district's local tax rate is calculated.

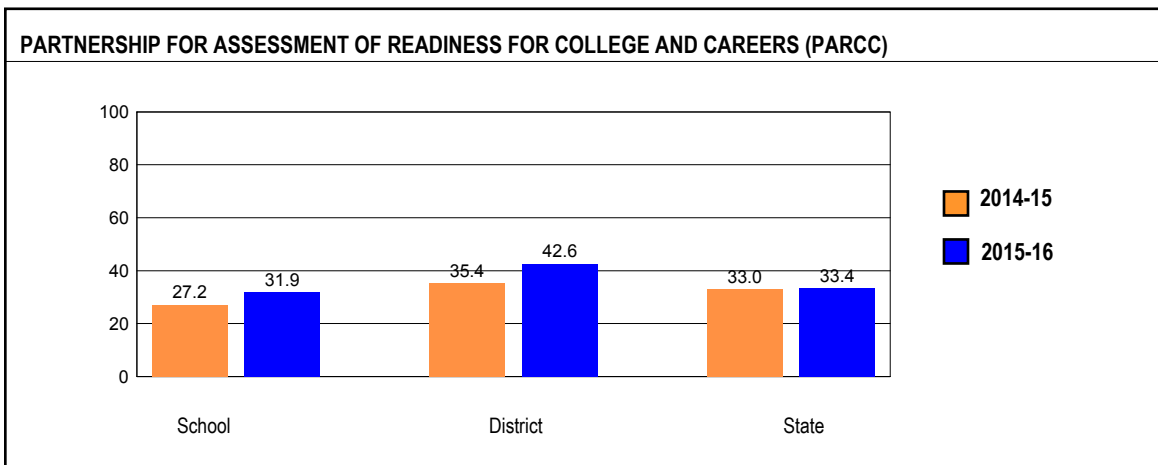
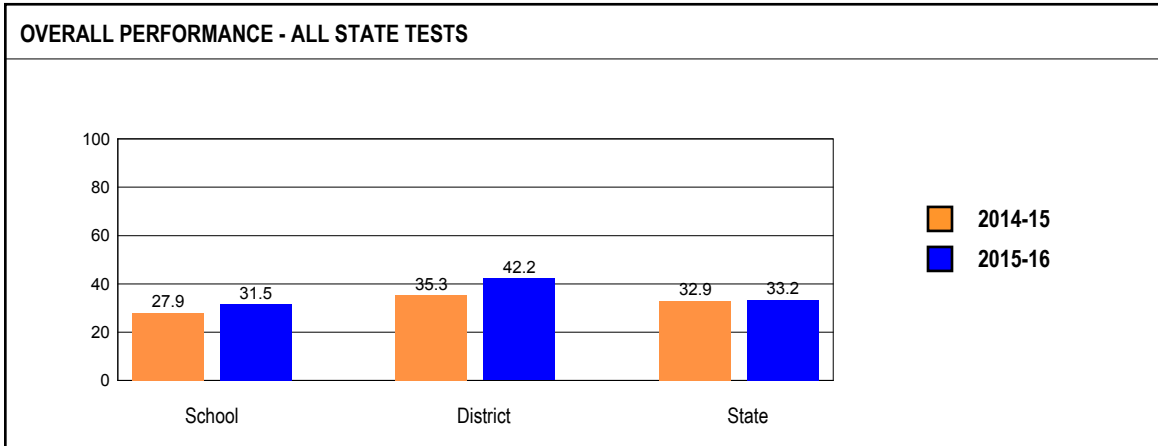
Total school tax rate is a district's total tax rate as it appears on local property tax bills.

Instructional expenditure per pupil includes the direct costs of teaching pupils or the interaction between teachers and pupils.

Operating expenditure per pupil includes the gross operating cost of a school district excluding summer school, adult education, bond principal retired, and capital expenditures.

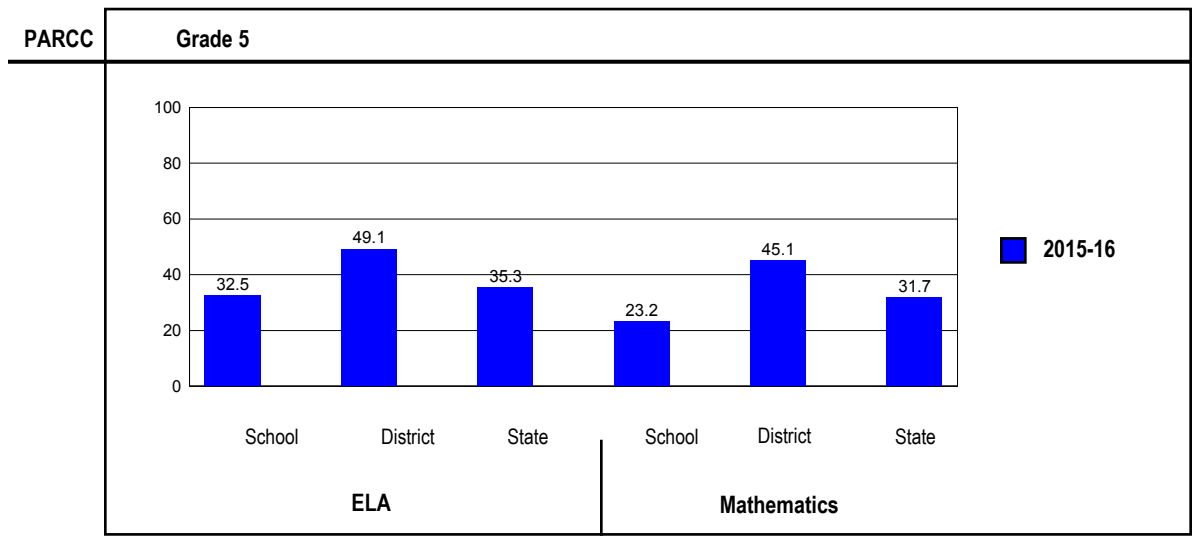
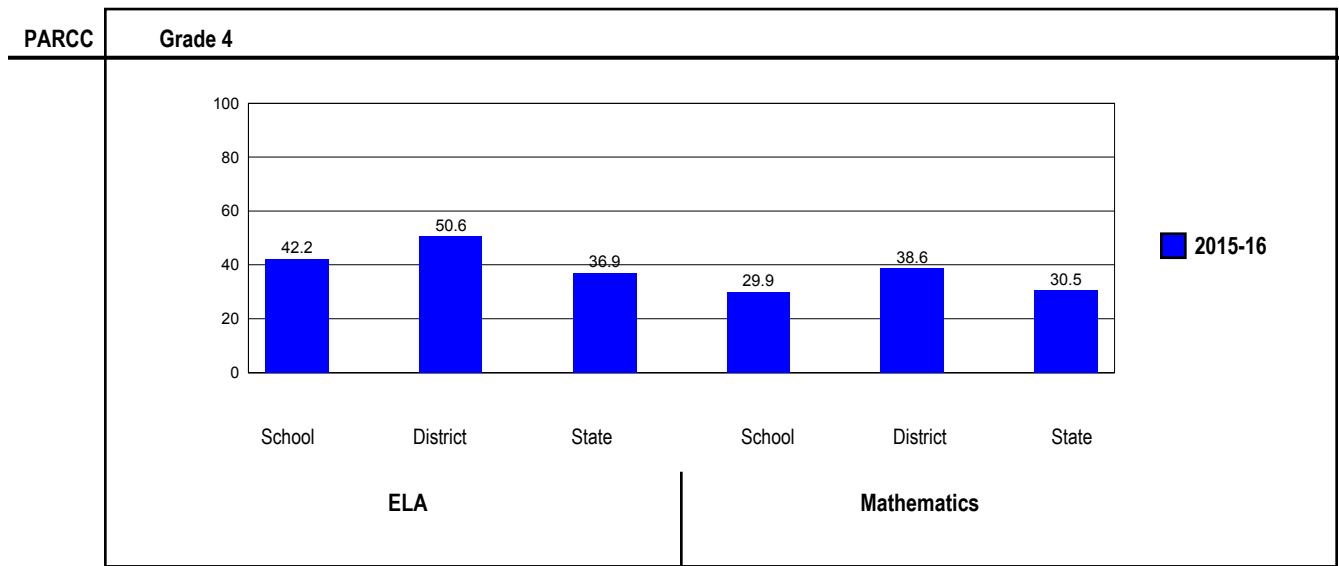
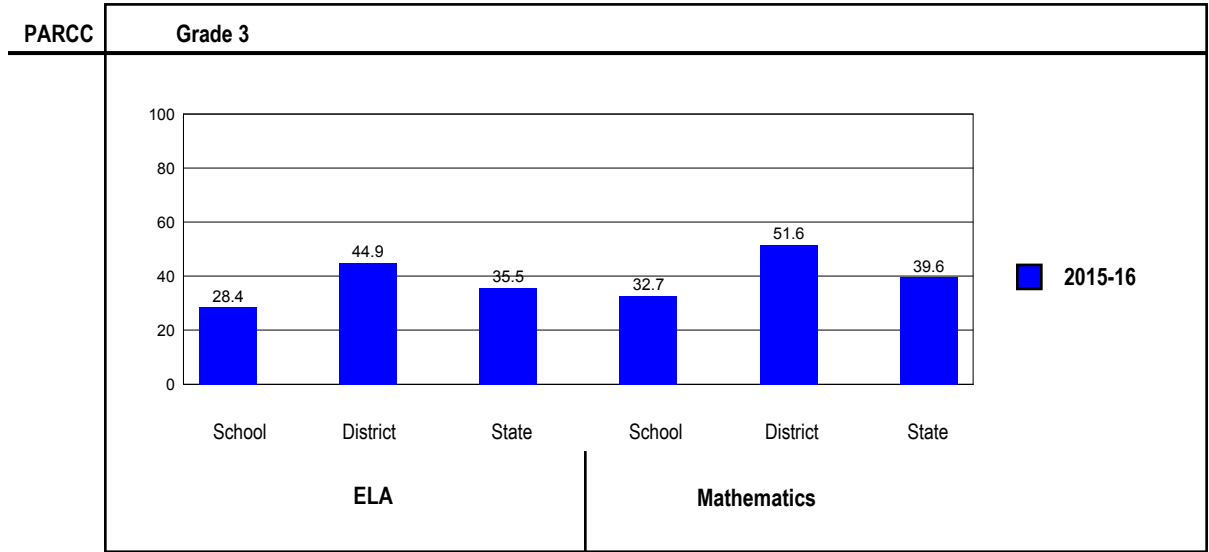
ACADEMIC PERFORMANCE**OVERALL STUDENT PERFORMANCE**

These charts present the overall percentage of state test scores categorized as meeting or exceeding the PARCC expectations or DLM-AA Standards for your district, and the state.



PARCC PERFORMANCE

These charts present the overall percentage of state test scores categorized as meeting or exceeding the PARCC expectations or DLM-AA Standards for your district, and the state.



PERFORMANCE ON STATE ASSESSMENTS

The PARCC is administered to students in grade 3 through 8 and high school. The DLM-AA is administered to students in grade 3 through 8 and 11 with disabilities whose Individualized Education Programs (IEPs) indicate that participation in the PARCC would not be appropriate.

Students with disabilities have an IEP (No Child Left Behind Act). An IEP is a written plan for a child with a disability who is eligible to receive special education services under the Individuals with Disabilities Education Act.

In order to protect students' identities, test data for groups of fewer than ten students are not reported.

PERCENTAGE OF STUDENTS NOT TESTED IN STATE TESTING PROGRAMS FOR ELA															
		Gender			Racial/Ethnic Background							LEP	Migrant	Students with Disabilities	Economically Disadvantaged
		All	Male	Female	White	Black	Hispanic	Asian	Native Hawaiian/Pacific Islander	American Indian	Two or More Races				
School	*Enrollment	303	179	124	107	39	119	31	0	1	6	120	0	53	207
	Reading	0.3	0.0	0.8	0.0	2.6	0.0	0.0				0.0		0.0	0.5
District	*Enrollment	3,079	1,603	1,476	1,296	146	1,262	337	9	9	20	618	0	513	1,527
	Reading	0.3	0.1	0.5	0.3	1.4	0.3	0.0			0.0	0.2		0.2	0.2
State	*Enrollment	1,050,307	537,851	512,454	512,582	177,823	272,642	49,633	1,043	2,886	33,656	87,711	198	147,577	527,950
	Reading	2.5	2.5	2.6	2.2	3.0	2.9	2.0	3.5	3.0	2.7	2.5	1.0	3.6	2.7

* Enrollment as reported during the testing windows for grades 3 - 8 and high school.

Number of LEP Students who have attended schools in the U.S. for less than 12 months and are not assessed on the State's reading/language arts test: 0

PERCENTAGE OF STUDENTS NOT TESTED IN STATE TESTING PROGRAMS FOR MATHEMATICS															
		Gender			Racial/Ethnic Background							LEP	Migrant	Students with Disabilities	Economically Disadvantaged
		All	Male	Female	White	Black	Hispanic	Asian	Native Hawaiian/Pacific Islander	American Indian	Two or More Races				
School	*Enrollment	306	181	125	108	39	119	33	0	1	6	123	0	53	208
	Mathematics	1.6	1.1	2.4	0.9	5.1	0.8	3.0				0.0		0.0	1.0
District	*Enrollment	3,110	1,623	1,487	1,306	146	1,275	345	9	9	20	649	0	515	1,555
	Mathematics	0.5	0.4	0.5	0.5	2.1	0.3	0.3			0.0	0.2		0.2	0.3
State	*Enrollment	1,025,813	525,396	500,415	494,198	176,422	271,200	47,430	1,046	2,841	32,624	91,569	202	145,620	524,025
	Mathematics	2.5	2.5	2.6	2.1	3.2	3.0	1.5	3.5	3.0	2.6	2.0	1.0	3.8	2.8

* Enrollment as reported during the testing windows for grades 3 - 8 and high school.

Partnership for Assessment of Readiness for College and Careers (PARCC)

Each Performance Level is a broad, categorical level defined by a student's overall scale score and used to report overall student performance by describing how well students met the expectations for their grade level/course. Each Performance Level is defined by a range of overall scale scores for the assessment. There are five Performance Levels for PARCC assessments:

- Level 1: Did not yet meet expectations
- Level 2: Partially met expectations
- Level 3: Approached expectations
- Level 4: Met expectations
- Level 5: Exceeded expectations

Students performing at levels 4 and 5 met or exceeded expectations, have demonstrated readiness for the next grade level/course and, ultimately, are on track for college and careers. Performance Level Descriptors (PLDs) describe the knowledge, skills, and practices that students should know and be able to demonstrate at each Performance Level in each content area (ELA/L and mathematics), and at each grade level/course. PLDs are available at <http://avocet.pearson.com/PARCC/Home>.

Grade 3

Grade 3 - All

Levels	ELA					Mathematics				
	1	2	3	4	5	1	2	3	4	5
School	25.5	29.4	16.7	25.5	2.9	22.4	18.4	26.5	28.6	4.1
District	14.6	17.4	23.2	38.3	6.6	10.6	12.5	25.3	39.2	12.4
State	20.8	19.8	23.9	32.2	3.2	13.8	20.4	26.2	31.8	7.8

Grade 3 - Gender

Levels	ELA					Mathematics					
	1	2	3	4	5	1	2	3	4	5	
Male	School	32.2	28.8	16.9	22.0	0.0	28.1	19.3	21.1	28.1	3.5
	District	16.6	18.8	23.1	36.5	5.1	11.2	12.0	25.4	37.3	14.1
	State	23.8	20.7	24.2	29.2	2.2	14.8	20.2	25.5	31.4	8.0
Female	School	16.3	30.2	16.3	30.2	7.0	14.6	17.1	34.1	29.3	4.9
	District	12.1	15.6	23.2	40.6	8.5	9.7	13.3	25.2	41.6	10.2
	State	17.7	18.9	23.6	35.4	4.4	12.7	20.6	27.0	32.2	7.6

Grade 3 - Racial/Ethnic Background

Levels	ELA					Mathematics					
	1	2	3	4	5	1	2	3	4	5	
White	School	12.5	27.5	27.5	30.0	2.5	10.3	10.3	30.8	41.0	7.7
	District	5.4	14.7	23.2	47.8	8.9	4.0	8.0	23.7	48.2	16.1
	State	12.2	17.1	25.8	40.5	4.4	7.6	15.7	26.0	40.3	10.3
Black	School	50.0	20.0	0.0	30.0	0.0					
	District	40.0	26.7	13.3	20.0	0.0	28.6	14.3	35.7	21.4	0.0
	State	34.4	23.9	21.7	19.0	0.9	27.0	28.2	25.8	17.3	1.8
Hispanic	School	39.0	34.1	9.8	17.1	0.0	35.0	25.0	25.0	15.0	0.0
	District	26.1	21.3	23.7	26.6	2.4	19.0	18.1	28.1	30.0	4.8
	State	29.5	23.5	23.1	22.7	1.2	17.5	25.9	28.8	24.5	3.4
Asian	School										
	District	2.4	4.8	26.2	50.0	16.7	0.0	4.9	17.1	48.8	29.3
	State	7.0	10.0	18.0	53.4	11.6	3.7	7.3	15.6	43.1	30.4
Native Hawaiian/Pacific Islander	School										
	District										
	State	11.8	11.2	21.7	47.2	8.1	9.2	12.3	29.4	33.1	16.0
American Indian	School										
	District										
	State	26.4	24.1	20.1	27.8	1.6	18.2	23.1	28.4	23.6	6.7
Two or More Races	School										
	District	0.0	40.0	20.0	40.0	0.0	0.0	30.0	30.0	20.0	20.0
	State	17.4	19.4	24.1	34.8	4.3	13.5	19.5	25.5	32.5	9.0

Grade 3 - Limited-English-Proficient

Levels	ELA					Mathematics				
	1	2	3	4	5	1	2	3	4	5
School	28.1	31.3	21.9	18.8	0.0	23.4	18.8	28.1	29.7	0.0
District	21.4	22.6	27.1	25.9	3.0	14.4	18.1	28.4	35.4	3.7
State	34.1	25.1	22.2	18.1	0.6	19.2	26.9	28.3	22.8	2.9

Grade 3 - Students with Disabilities

Levels	ELA					Mathematics					
	1	2	3	4	5	1	2	3	4	5	
IEP	School	78.6	14.3	7.1	0.0	0.0	71.4	21.4	7.1	0.0	0.0
	District	57.1	17.5	6.3	19.0	0.0	41.3	22.2	17.5	17.5	1.6
	State	52.4	21.9	14.7	10.3	0.7	36.6	28.0	19.4	13.8	2.1
Non-IEP	School	17.0	31.8	18.2	29.5	3.4	14.3	17.9	29.8	33.3	4.8
	District	8.4	17.4	25.6	41.1	7.5	6.2	11.2	26.4	42.4	13.9
	State	16.0	19.5	25.3	35.5	3.6	10.3	19.3	27.3	34.5	8.7

Grade 3 - Economically Disadvantaged

Levels	ELA					Mathematics					
	1	2	3	4	5	1	2	3	4	5	
Free/Reduced Price Lunch	School	30.4	37.7	8.7	23.2	0.0	29.4	22.1	23.5	23.5	1.5
	District	23.6	24.7	20.1	29.0	2.7	17.8	18.6	26.1	31.4	6.1
	State	30.4	24.1	23.4	21.1	0.9	20.7	26.7	27.7	22.3	2.6
Not Eligible	School	15.2	12.1	33.3	30.3	9.1	6.7	10.0	33.3	40.0	10.0
	District	5.0	9.5	26.4	48.3	10.7	2.5	5.9	24.4	47.9	19.3
	State	9.6	14.8	24.5	45.1	5.9	5.7	13.1	24.5	42.8	13.9

Grade 4**Grade 4 - All**

Levels	ELA					Mathematics				
	1	2	3	4	5	1	2	3	4	5
School	11.2	18.1	28.4	36.2	6.0	16.2	29.1	24.8	29.1	0.9
District	8.8	15.8	24.8	39.3	11.3	8.5	25.8	27.1	34.9	3.7
State	13.8	20.2	29.1	31.0	5.9	16.3	26.5	26.7	27.9	2.6

Grade 4 - Gender

Levels	ELA					Mathematics					
	1	2	3	4	5	1	2	3	4	5	
Male	School	13.9	19.4	29.2	34.7	2.8	17.8	26.0	28.8	26.0	1.4
	District	10.4	17.8	26.4	36.1	9.3	8.4	25.3	27.8	33.7	4.8
	State	17.1	21.9	29.2	27.8	4.0	17.3	26.4	25.9	27.8	2.7
Female	School	6.8	15.9	27.3	38.6	11.4	13.6	34.1	18.2	34.1	0.0
	District	7.0	13.6	23.0	42.8	13.6	8.6	26.3	26.3	36.2	2.5
	State	10.5	18.3	29.0	34.4	7.8	15.2	26.6	27.7	28.0	2.5

Grade 4 - Racial/Ethnic Background

Levels	ELA					Mathematics					
	1	2	3	4	5	1	2	3	4	5	
White	School	9.1	18.2	27.3	33.3	12.1	21.2	15.2	27.3	33.3	3.0
	District	4.5	11.4	25.5	43.2	15.5	7.2	17.5	26.0	44.4	4.9
	State	8.4	15.3	29.2	39.2	8.0	9.3	21.2	29.2	37.0	3.2
Black	School	17.6	35.3	23.5	23.5	0.0	29.4	29.4	41.2	0.0	0.0
	District	15.4	23.1	26.9	30.8	3.8	23.1	23.1	34.6	15.4	3.8
	State	24.8	28.1	28.3	17.3	1.5	31.8	34.3	22.0	11.5	0.4
Hispanic	School	10.9	17.4	30.4	34.8	6.5	10.9	39.1	23.9	26.1	0.0
	District	15.0	23.3	22.8	31.6	7.3	10.4	38.9	27.5	21.8	1.6
	State	18.5	26.3	31.0	22.0	2.3	21.2	33.9	26.5	17.6	0.7
Asian	School	11.1	5.6	22.2	61.1	0.0	10.5	21.1	10.5	57.9	0.0
	District	3.2	7.9	23.8	54.0	11.1	3.1	17.2	29.7	43.8	6.3
	State	4.3	8.6	21.0	47.9	18.2	4.0	11.0	20.4	50.7	13.9
Native Hawaiian/Pacific Islander	School										
	District										
	State	6.8	15.5	29.8	38.5	9.3	7.4	23.9	27.0	37.4	4.3
American Indian	School										
	District										
	State	16.0	22.1	33.6	24.1	4.3	17.5	30.8	29.3	21.6	0.8
Two or More Races	School										
	District										
	State	12.5	17.0	28.8	33.6	8.2	15.6	24.8	26.1	29.9	3.6

Grade 4 - Limited-English-Proficient

Levels	ELA					Mathematics				
	1	2	3	4	5	1	2	3	4	5
School	21.6	24.3	27.0	27.0	0.0	21.1	31.6	31.6	15.8	0.0
District	21.3	33.3	25.5	19.1	0.7	16.6	41.4	29.0	13.1	0.0
State	37.4	35.2	21.3	6.0	0.2	35.9	39.0	18.3	6.6	0.2

Grade 4 - Students with Disabilities

Levels	ELA					Mathematics					
	1	2	3	4	5	1	2	3	4	5	
IEP	School	40.0	35.0	20.0	5.0	0.0	55.0	30.0	15.0	0.0	0.0
	District	27.5	41.3	21.3	8.8	1.3	28.8	46.3	20.0	3.8	1.3
	State	43.4	28.6	17.8	9.3	0.9	39.5	34.4	16.2	9.4	0.6
Non-IEP	School	5.2	14.6	30.2	42.7	7.3	8.2	28.9	26.8	35.1	1.0
	District	5.3	11.1	25.5	44.9	13.2	4.8	22.0	28.4	40.6	4.1
	State	9.1	18.8	30.9	34.5	6.6	12.6	25.3	28.4	30.8	2.9

Grade 4 - Economically Disadvantaged

Levels	Reading					Mathematics					
	1	2	3	4	5	1	2	3	4	5	
Free/Reduced Price Lunch	School	11.3	17.5	27.5	37.5	6.3	13.8	32.5	26.3	27.5	0.0
	District	12.8	20.4	26.8	32.8	7.2	10.7	34.0	28.1	25.7	1.6
	State	20.7	27.0	30.4	20.2	1.8	24.5	34.1	25.3	15.5	0.6
Not Eligible	School	11.1	19.4	30.6	33.3	5.6	21.6	21.6	21.6	32.4	2.7
	District	5.0	11.5	22.9	45.4	15.3	6.5	17.9	26.2	43.7	5.7
	State	6.3	12.6	27.7	43.1	10.4	7.1	18.1	28.3	41.7	4.8

Grade 5**Grade 5 - All**

Levels	ELA					Mathematics				
	1	2	3	4	5	1	2	3	4	5
School	12.5	23.8	31.3	31.3	1.3	17.1	26.8	32.9	15.9	7.3
District	7.1	17.7	26.1	44.6	4.5	7.6	18.9	28.4	39.0	6.0
State	12.7	23.1	28.9	33.0	2.3	12.8	26.2	29.2	27.5	4.2

Grade 5 - Gender

Levels	ELA					Mathematics					
	1	2	3	4	5	1	2	3	4	5	
Male	School	17.4	26.1	23.9	30.4	2.2	19.1	25.5	34.0	12.8	8.5
	District	9.0	21.4	27.8	39.1	2.6	9.6	20.7	27.0	35.6	7.0
	State	15.4	25.6	29.3	28.4	1.3	14.8	26.7	27.5	26.5	4.5
Female	School	5.9	20.6	41.2	32.4	0.0	14.3	28.6	31.4	20.0	5.7
	District	4.9	13.3	24.0	51.1	6.7	5.3	16.7	30.0	43.2	4.8
	State	9.8	20.6	28.4	37.9	3.4	10.8	25.8	31.0	28.6	3.9

Grade 5 - Racial/Ethnic Background

Levels	ELA					Mathematics					
	1	2	3	4	5	1	2	3	4	5	
White	School	12.5	15.6	34.4	34.4	3.1	15.2	15.2	33.3	21.2	15.2
	District	4.4	12.6	22.3	53.9	6.8	5.8	12.5	26.0	46.2	9.6
	State	7.3	17.5	29.9	42.3	3.0	7.9	20.7	30.6	35.4	5.3
Black	School	20.0	20.0	30.0	30.0	0.0	20.0	40.0	30.0	10.0	0.0
	District	7.7	23.1	26.9	38.5	3.8	11.5	26.9	30.8	30.8	0.0
	State	23.8	32.9	27.0	15.9	0.4	24.8	37.5	25.5	11.8	0.5
Hispanic	School	12.5	31.3	31.3	25.0	0.0	21.9	37.5	31.3	9.4	0.0
	District	11.0	23.4	29.2	33.5	2.9	10.9	26.5	31.3	28.9	2.4
	State	17.3	30.0	29.8	22.1	0.7	16.3	32.7	30.7	19.1	1.2
Asian	School										
	District	2.2	13.0	28.3	54.3	2.2	0.0	10.4	27.1	52.1	10.4
	State	4.1	9.3	20.1	57.3	9.3	3.2	9.0	20.0	47.7	20.1
Native Hawaiian/Pacific Islander	School										
	District										
	State	6.7	18.2	33.3	37.6	4.2	10.8	19.9	26.5	34.3	8.4
American Indian	School										
	District										
	State	14.6	28.5	32.3	22.7	1.9	16.2	28.8	30.5	22.1	2.4
Two or More Races	School										
	District										
	State	10.9	21.8	28.9	35.4	3.0	12.9	26.1	28.5	26.8	5.7

Grade 5 - Limited-English-Proficient

Levels	ELA					Mathematics				
	1	2	3	4	5	1	2	3	4	5
School	41.2	35.3	17.6	5.9	0.0	52.6	26.3	15.8	5.3	0.0
District	36.7	46.7	13.3	3.3	0.0	25.8	40.9	25.8	7.6	0.0
State	44.1	40.4	12.7	2.9	0.1	34.4	42.0	18.3	5.1	0.3

Grade 5 - Students with Disabilities

Levels	ELA					Mathematics					
	1	2	3	4	5	1	2	3	4	5	
IEP	School	53.3	33.3	6.7	6.7	0.0	53.3	26.7	13.3	0.0	6.7
	District	32.9	35.4	19.0	12.7	0.0	26.3	32.5	27.5	11.3	2.5
	State	42.5	33.9	16.2	7.2	0.2	36.6	38.2	17.3	7.1	0.7
Non-IEP	School	3.1	21.5	36.9	36.9	1.5	9.0	26.9	37.3	19.4	7.5
	District	2.2	14.3	27.4	50.7	5.3	4.1	16.3	28.5	44.4	6.7
	State	8.0	21.4	30.9	37.1	2.6	9.1	24.4	31.0	30.7	4.7

Grade 5 - Economically Disadvantaged

Levels	ELA					Mathematics					
	1	2	3	4	5	1	2	3	4	5	
Free/Reduced Price Lunch	School	12.5	23.2	35.7	26.8	1.8	15.8	31.6	33.3	14.0	5.3
	District	10.0	23.3	30.9	31.7	4.0	9.4	24.8	31.9	29.5	4.3
	State	19.6	31.0	29.4	19.5	0.5	19.5	34.7	28.8	16.0	1.0
Not Eligible	School	12.5	25.0	20.8	41.7	0.0	20.0	16.0	32.0	20.0	12.0
	District	4.1	12.0	21.1	57.9	5.0	5.8	12.8	24.7	49.0	7.8
	State	5.4	14.8	28.3	47.3	4.2	5.8	17.4	29.6	39.6	7.6